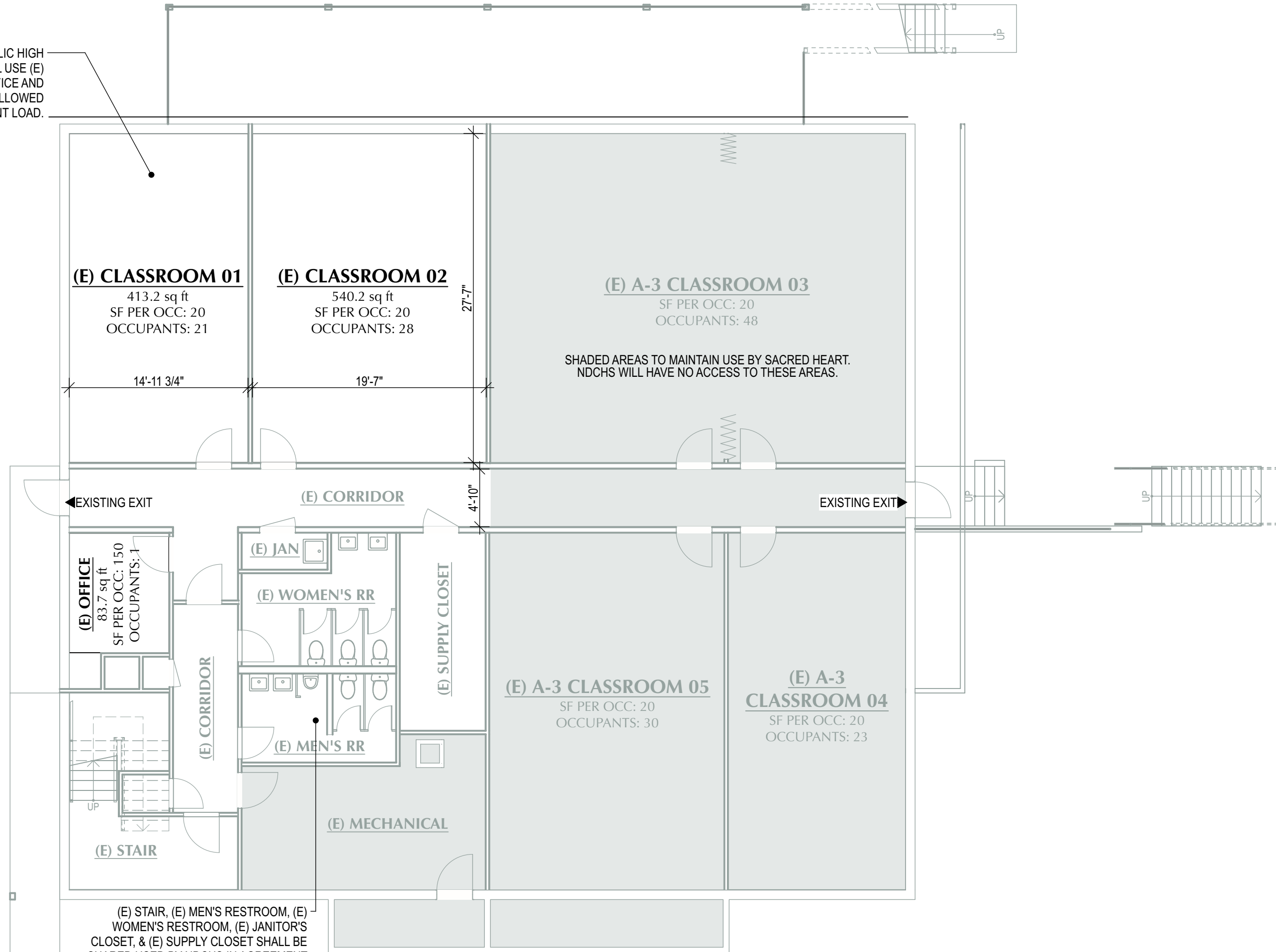


NORTH DEANERY CATHOLIC HIGH SCHOOL IS GRANTED FULL USE (E) CLASSROOM 01, 02, & (E) OFFICE AND SHALL NOT EXCEED ALLOWED OCCUPANT LOAD.



(E) STAIR, (E) MEN'S RESTROOM, (E) WOMEN'S RESTROOM, (E) JANITOR'S CLOSET, & (E) SUPPLY CLOSET SHALL BE SHARED USED BY NDCHS IN AGREEMENT WITH SACRED HEART.

NDCHS USE SHALL BE PRIMARILY WEEKDAYS 8-4, WHILE SACRED HEART USE IS IN THE EVENINGS AND WEEKENDS.

PRELIM BASEMENT PLAN

1/8" = 1'-0"



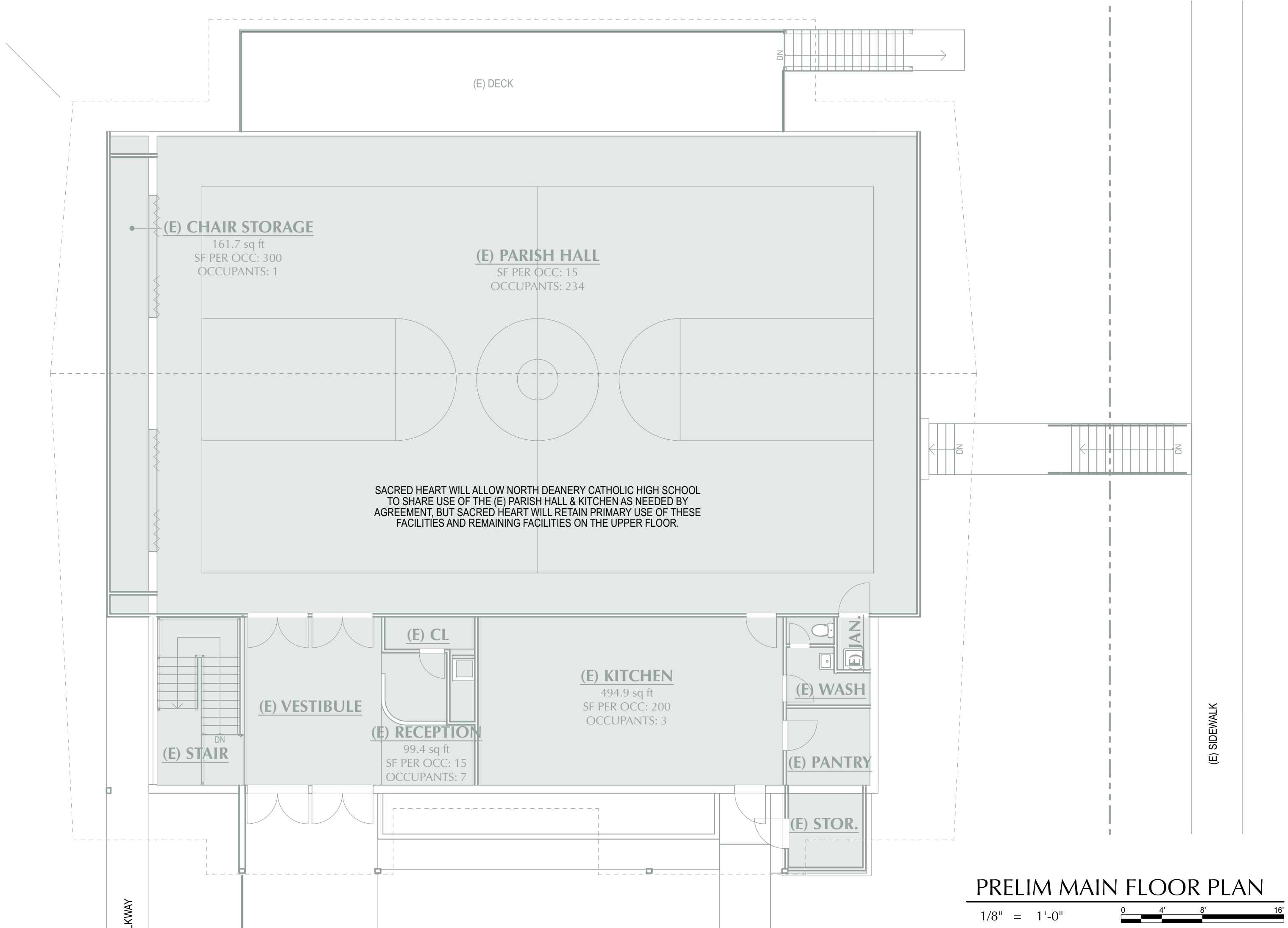
NORTH DEANERY CATHOLIC HIGH SCHOOL
SACRED HEART PARTIAL CHANGE OF OCCUPANCY
1100 14TH ST • BELLINGHAM, WA 98225

BRODERICK ARCHITECTS
55 S. ATLANTIC STREET, SUITE #301
SEATTLE, WASHINGTON 98134
206.682.7525

PRELIMINARY FLOOR PLANS
8/1/25

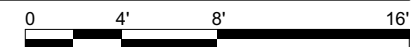
SD.2

SACRED HEART



PRELIM MAIN FLOOR PLAN

1/8" = 1'-0"



NORTH DEANERY CATHOLIC HIGH SCHOOL
SACRED HEART PARTIAL CHANGE OF OCCUPANCY
1100 14TH ST • BELLINGHAM, WA 98225

BRODERICK ARCHITECTS
55 S. ATLANTIC STREET, SUITE #301
SEATTLE, WASHINGTON 98134
206.682.7525

PRELIMINARY FLOOR PLANS
8/1/25
SD.3
SACRED HEART